

Joseph Hood Primary School

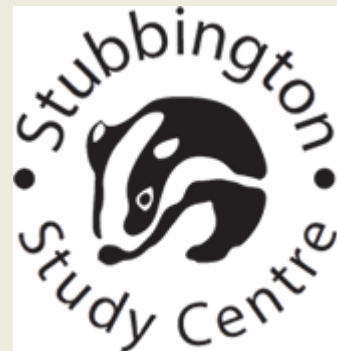
Residential Trip to Stubbington Study Centre

Monday 19th – Friday 23rd May 2025



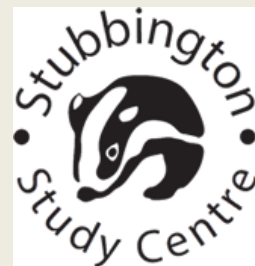
Who's going?

- Children from Year 4
- The children will be accompanied by 3 full time members of Joseph Hood staff and a day staff member
- Stubbington also have resident staff including a welfare assistant, who are available should the need arise.
- These staff also support with the teaching of activities during the day.



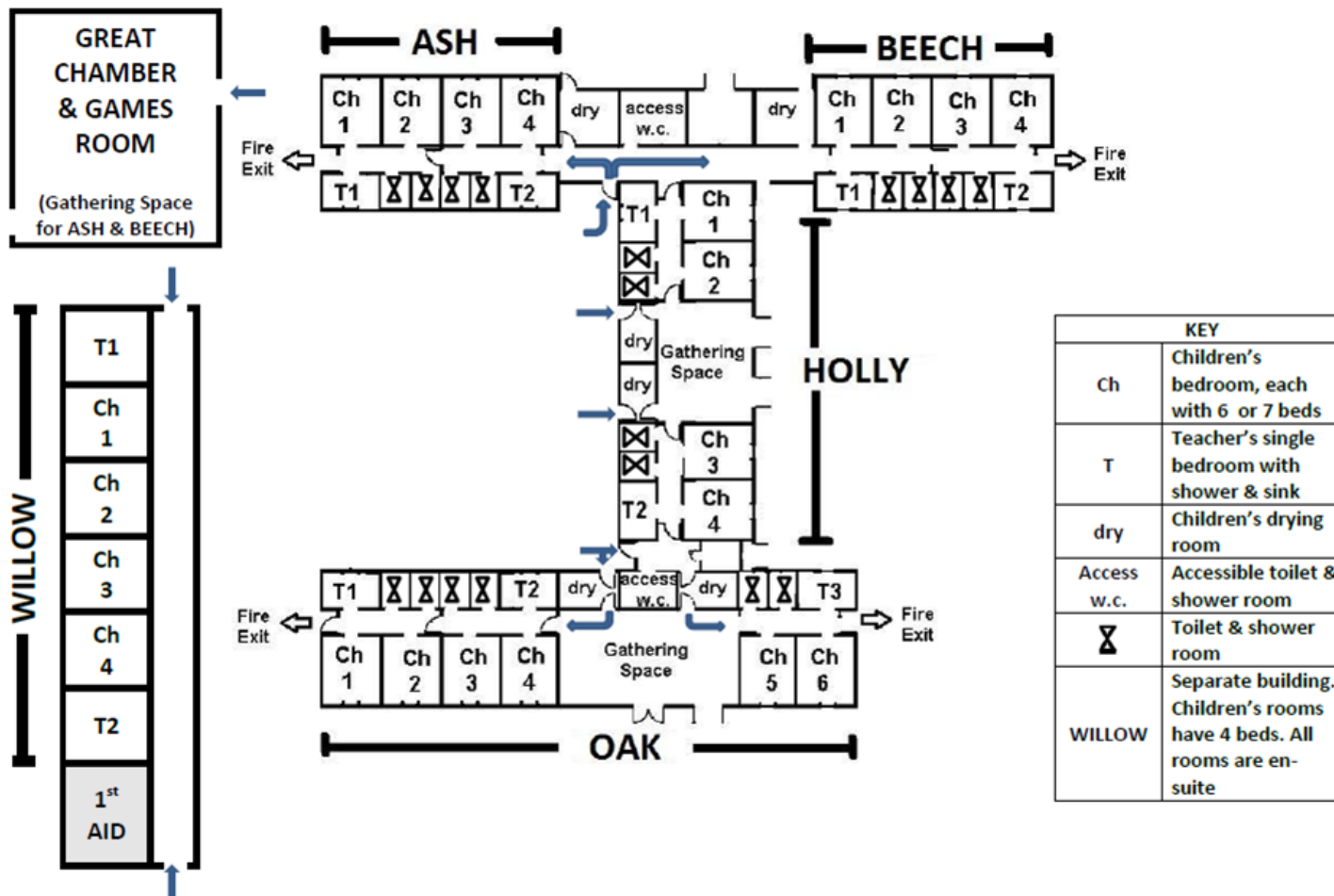
The Centre.....

- The centre can accommodate up to 112 children – with another school;
- Each school is allocated accommodation block(s);
- Children are accommodated in single gender rooms of up to 6 beds – teachers allocate rooms prior to the visit but children find out when they arrive;
- Teacher's rooms are in the same block as the children's in a ratio of 1 to 2 bedrooms;
- Each school is allocated a central 'break out space' which acts as social space;
- Accommodation blocks are code entry – no entry from the outside at night.
- Showers and bathrooms are situated within the blocks



Stubbington Study Centre - new dorm layout 2014

(Not to scale)



Children are shown to their dormitories.

They begin to think about our three key words:



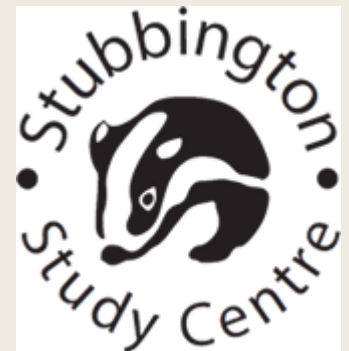
Teamwork

Responsibility

Respect

Food...

- All the children eat together in the centre's dining room which is called the Snuffle hole
- Children are fed three meals a day plus snacks throughout the day and supper just before bed time
- There is a choice at meal times including a cooked breakfast.
- Different dietary needs can be catered for – provide details on the medical form.





Menu

Menus will vary according to season and availability but are typically as follows:

◆ **Best Healthy**

◆ **Less Healthy**

◆ **Least Healthy**

	Cereals	Cooked Breakfast
BREAKFAST (8.10am)	◆ Rice Krispies, Weetabix, Corn Flakes, Coco Pops	◆ Sausage or Bacon, ◆ Egg, Beans, Waffles or Mash Browns, ◆ Toast, Bread ◆ Spreads
	LUNCH (12:00pm) with Tea or Squash	DINNER (5:20pm) with Water
MONDAY	◆ Jacket Potato with cheese or tuna ◆ Filled Rolls ◆ Fish Fingers ◆ Mixed Salad ◆ Bread and ◆ Spreads ◆ Yoghurt and ◆ Fresh Fruit ◆ Cheese and Biscuits ◆ Homemade Fairy Cakes	◆ Chicken Nuggets ◆ Battered Fresh Fish ◆ Cheese and Onion Pastv ◆ Vegetables of the Day ◆ Chips ◆ Yoghurt ◆ Fresh Fruit ◆ Cheese and Biscuits ◆ Chocolate Doughnut
TUESDAY	◆ Macaroni Cheese ◆ Filled Rolls ◆ Sausage Rolls ◆ Mixed Salad ◆ Bread and ◆ Spreads ◆ Yoghurt and ◆ Fresh Fruit ◆ Cheese and Biscuits ◆ Homemade Muffins	◆ Homemade Pizza ◆ Fish Cakes ◆ Homemade Chicken Pie ◆ Homemade Cottage Pie ◆ Vegetables of the Day ◆ Potato Wedges ◆ Yoghurt and ◆ Fresh Fruit ◆ Annel Delight ◆ Cheese and Biscuits
WEDNESDAY	◆ Jacket Potato with cheese or tuna ◆ Filled Rolls ◆ Fish Fingers ◆ Mixed Salad ◆ Bread and ◆ Spreads ◆ Yoghurt and ◆ Fresh Fruit ◆ Cheese and Biscuits ◆ Iced Sponge Cake	◆ Sausages ◆ Cheese Pastv ◆ Pasta with Bolognese Sauce ◆ Vegetables of the Day ◆ Sauté Potatoes ◆ Yoghurt and ◆ Fresh Fruit ◆ Cheese and Biscuits ◆ Chocolate Sponge
THURSDAY	◆ Macaroni Cheese ◆ Filled Rolls ◆ Sausage Rolls ◆ Mixed Salad ◆ Bread and ◆ Spreads ◆ Yoghurt and ◆ Fresh Fruit ◆ Cheese and Biscuits ◆ Homemade Cookies	◆ Homemade Pizza ◆ Fish Cakes ◆ Chicken Curry ◆ Vegetables of the Day ◆ Rice ◆ Chips ◆ Yoghurt and ◆ Fresh Fruit ◆ Cheese and Biscuits ◆ Chocolate Rice Krispies
FRIDAY	◆ Jacket Potato with cheese or tuna ◆ Filled Rolls ◆ Fish Fingers ◆ Mixed Salad ◆ Spaghetti Rins ◆ Bread ◆ Spreads ◆ Yoghurt and ◆ Fresh Fruit ◆ Chocolate Biscuits	SUPPER (7.45-8PM) ◆ Milk, Chocolate or Strawberry Milkshake ◆ Orange or Lemon Squash ◆ Stubbington Biscuits

SPECIAL DIETS: Special diets are catered for on prior request (for example: Vegetarian, gluten or dairy free, coeliac, diabetic etc)





Inside the dining room

A typical day.....

8am Rising Bell

8.20am Breakfast

9.15am Room Inspection

9.30am Activities

12.20pm Lunch

1pm Tuck Shop

1.30pm Activities

4pm Recreation and drinks

5.20pm Evening Meal

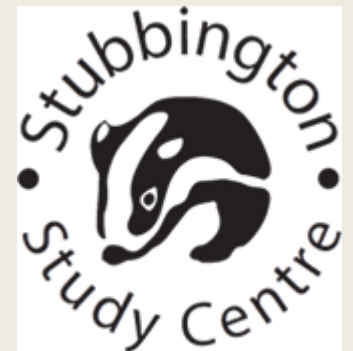
6pm Classroom session

7pm Evening activity

7.45pm Supper

8pm Dormitories (showers, games, etc)

9.30pm Lights Out (unless badger watching!)



WEEKLY TIMETABLE



	8.10-9.30	9.30-12.00	12.00-13.00	13.00-13.30	13.30-16.00	16.00-16.30	16.30-17.20	17.20-18.00	18.00-19.00	19.00-19.45	19.45-20.00	20.00→
MON	Breakfast Inspection	Arrival & Induction	Lunch	Tuck shop	PM Session	Free Time	House comp	Dinner	Class Session (schools)	Wildlife Talk	Supper	Dormitories (schools)
TUE	Breakfast Inspection	AM Session	Free time Lunch	Tuck shop	PM Session	Free Time	House comp	Dinner	Class Session (schools)	Wildlife Photographer	Supper	Dormitories (schools)
WED	Breakfast Inspection	AM Session	Free time Lunch	Tuck shop	PM Session	Free Time	House comp	Dinner	Class Session (schools)	Wide Game	Supper	Dormitories (schools)
THU	Breakfast Inspection	AM Session	Free time Lunch	Tuck shop	PM Session	Free Time	House comp	Dinner	Class Session (schools)	Song Contest	Supper (20.00)	Dormitories (schools)
FRI	Breakfast Inspection	AM Session	Free time Lunch	Home								

"House Comp" –

- SSC staff set-up during free time (16:00-16:30)
- Visiting school staff assist SSC staff. Activity lasts 30 mins (16:30-17:00)
- Last 10-15 mins song practice with visiting staff while SSC staff clear activities away.



Our Adventure Playground



...only used under adult supervision.



Sunny Pond



Murky Marsh

There are 7 well stocked ponds



Most of the time will be spent working in our outdoor classroom!



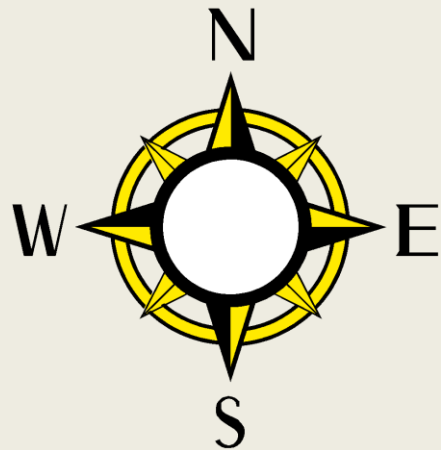
Seashore Activities: all seashore activities are led by a member of Centre staff.







House Challenges



Orienteering



Stubbington Fox





Shhh! Here they come!



Children will visit the hide late one evening to spy on the wildlife.

SOUVENIR ORDER FORM

Valid between September 2022 and August 2023*

During their stay at ~~Stubbington~~ your child will be able to buy sweets and souvenirs from the Tuck Shop. However, if you would like to purchase one of our bespoke ~~Stubbington~~ sweatshirts or a glove puppet for your child, please return the completed form below, along with your payment, in a sealed envelope, to school prior to your child's trip. Please note that if the size chosen does not fit, a suitable replacement will be supplied. **We can only accept CASH or POSTAL ORDER.** (Postal Orders should be made payable to ~~Stubbington~~ Study Centre).

Thank you

Name of School	Name of child
----------------	---------------


 + **Sweatshirts £16.00 each** (Please indicate of colours)

Sizes	26" 5-6yrs	30" 7-8yrs	32" 9-11yrs	34" 12-13yrs	XS 36"	S 38"	M 40"	L 42"	XL 44"
Red									
Navy Blue									
Royal Blue									
Unborn									
Burgundy									
Quantity Required									

Glove Puppets - £3.00 each (Pictures are for illustration purposes only, actual puppet may vary)
Fox

Badger


Quantity	Fox puppet	Badger puppet

 Please find enclosed Payment (cash/Postal Order) to the sum of £ for the purchase of the ~~Stubbington~~ goods. **Cheques cannot be accepted.**

*If this form is out of date, please see our website for the latest version

Communications this Year

- There will be a second meeting later on this year (Summer 1) in which we will discuss the specifics of the visit before we go e.g. timings, school / home communication, spending money and medical check ins
- In the **spring term**, we will send out a medical form - when this is sent, please complete accurately including any prescribed medications that will need to be administered during the visit; a part of the form will also ask you about any **dietary restrictions / requirements**
- Please do hesitate to contact us if you have any questions
- Please see Sue McDonnell regarding payment plans and payment options
- We will send this slideshow out to your parentmail account

Frequently asked questions:

- ❖ ***Can I call and speak to my child / can my child call and speak to me whilst they are away?***
 - Unfortunately, this will not happen. Staff will comfort any children who are feeling a little homesick. This does not happen very much as children are so busy all day long.

- ❖ ***What happens if my child gets sick / wets the bed / gets hurt?***
 - School staff will be in rooms near the children's dorm rooms. Staff names are pinned on the doors. Staff are discrete when sorting these issues out.

- ❖ ***Will school staff call me?***
 - School staff will only call you if they need to give you information, such as; if your child has been unwell, has been hurt and has needed medical attention by the first aid staff onsite (this will not happen for minor scrapes and cuts), if we need to take your child to the local minor injury clinic, etc. This is why it is crucial that you put more than one up-to-date telephone number that you can be contacted on.

- ❖ ***How will we be informed about how the children are getting on?***
 - A Parentmail will go out daily- staff will do this once a day. Staff are busy with the children between getting up time (7.30 am) until all asleep time (10.00pm ish). Parents may also receive brief updates from the office - arrived safely, on their way back, etc.

Questions?

Check out the website for Stubbington Open Days- this is a chance for you and your child to do a pre-visit.

<https://www.hants.gov.uk/educationandlearning/stubbingtonstudycentre/parentschildren>

